

Environmental Considerations

Technical, environmental and cultural heritage surveys have been undertaken to inform the project location and minimise impacts.

TE H2 has undertaken over two years of extensive desktop, field and environmental studies across a study area of approximately 13,000 hectares to help determine the proposed footprint of the Wak Wak Solar Farm project. These large scale, detailed ecological surveys contributed to a detailed, multi-stage refinement process which focused on minimising impact to and avoiding key environmentally significant areas.

The result of the site selection refinement process is an area of approximately 2,500 hectares being proposed for solar infrastructure. The project avoids significant impacts to the region's most vital ecosystems and minimises potential impacts to local biodiversity.

Protecting Biodiversity

TE H2 has undertaken a range large scale surveys using local expert consultants to reduce the initial 13,000 hectare interest area to a 5,000 hectare study area. Using the results of further specific and targeted ecological surveys, flood modelling, habitat quality assessments, topographical surveys and soil assessments, TE H2 removed additional areas with high biodiversity values, resulting in the final proposed project footprint of approximately 2,500 hectares. Key natural features that were

identified in the surveys and have been avoided in the footprint include:

- Sandsheet Heath and Rainforest Patches
- Protected Fauna Habitats
- Riparian Vegetation buffered in alignment with the Northern Territory Land Clearing Guidelines.

Land history

TE H2 has also considered the prior use of the land in the assessment of the solar footprint. The proposed project layout site has a history of human use and existing environmental pressures.

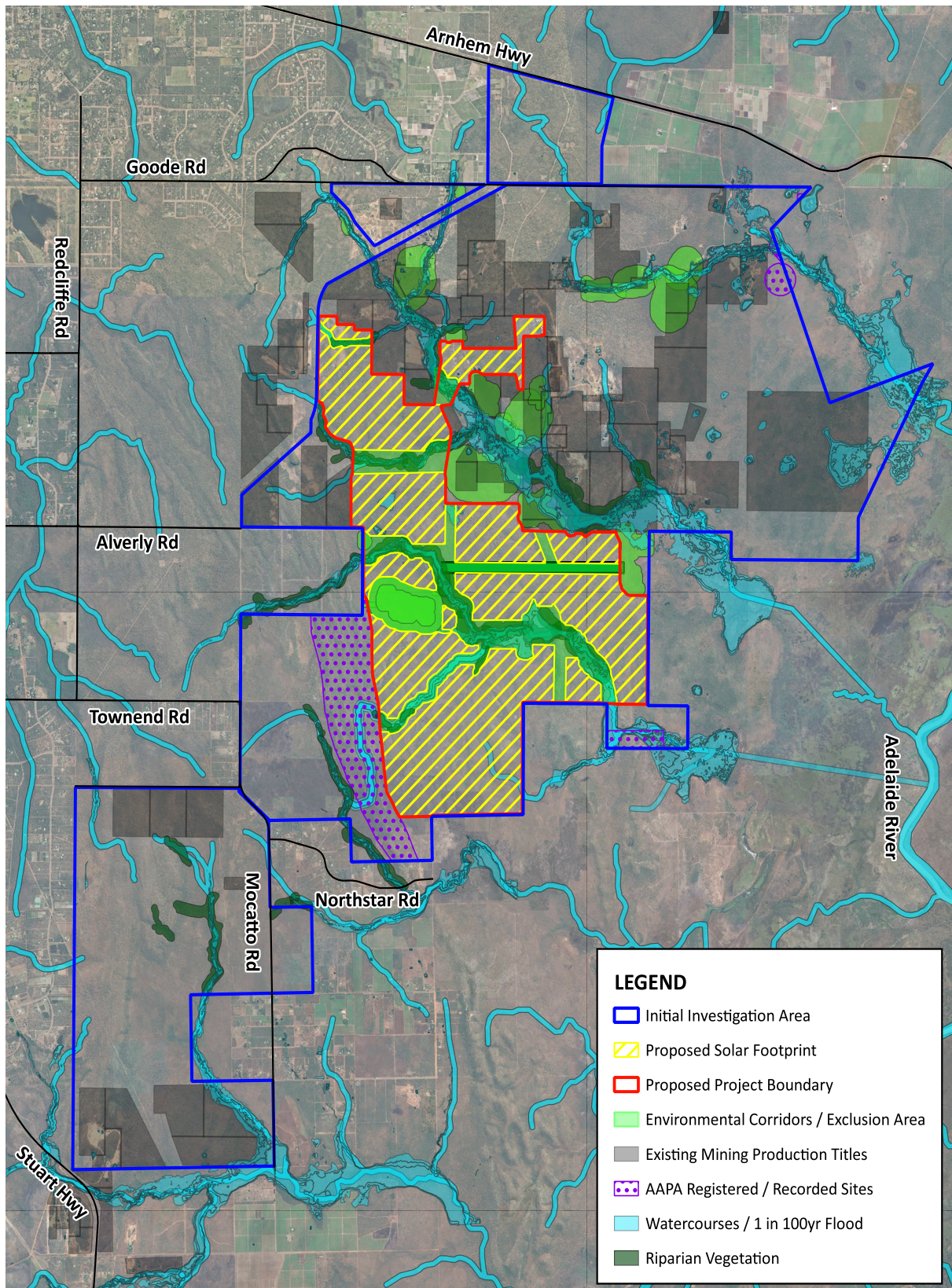
The proposed project site is located on pastoral land, and has a history of commercial cattle grazing, associated pastoral activities and historical indigenous use. The more northern parts of the project site have been disturbed by extractive activities, including sand and gravel extraction. These past and current activities have involved land clearing, construction of access tracks, and the operation of heavy machinery.

Environmental management




The Wak Wak Solar Farm project will include a robust set of strategies to protect and manage the environment on the selected site during the construction and operation phases. These strategies are being developed, and will consider and ensure:

- Careful construction staging
- Erosion and sediment control plans and protection measure
- Maintaining waterways and key hydrological features

Wak Wak Solar Farm proposed layout and environmental constraints



Contact us

-  www.wakwaksolarfarm.com.au
-  wakwaksolarfarm@te-h2.com
-  1800 961 999

TotalEnergies H₂
a company owned by TotalEnergies and **eren**